



BAR α BAR ONE

Tripod turnstiles





BAR TRIPOD TURNSTILES

Our product line of waist-height tripod turnstiles is suitable for a wide variety of indoor and outdoor applications. With high quality construction and reliability, long term cost effective operation is assured. A wide range of designs enables to provide an ideal model to suit any interior and exterior. BAR tripod turnstiles represent a classic and safe way to protect your premises.

BAR turnstiles are equipped by motor driven unit with silent and smooth operation that is automatically adapted to the passing speed of users.



BAR ONE TURNSTILES

Our new product line of BAR ONE is a unique waistheight turnstile range with space-saving, compact and modern design utilizing patented Magnetic Direct Drive motor - MDD. Compared to the conventional tripod technology, BAR ONE turnstiles have a higher throughput. These products can be extended with a broad variety of optional accessories. MDD does not utilize a standard mechanical gearbox but provides exceptional reliability and maintenancefree operation and inherent resistance to the effects of dust and humidity.

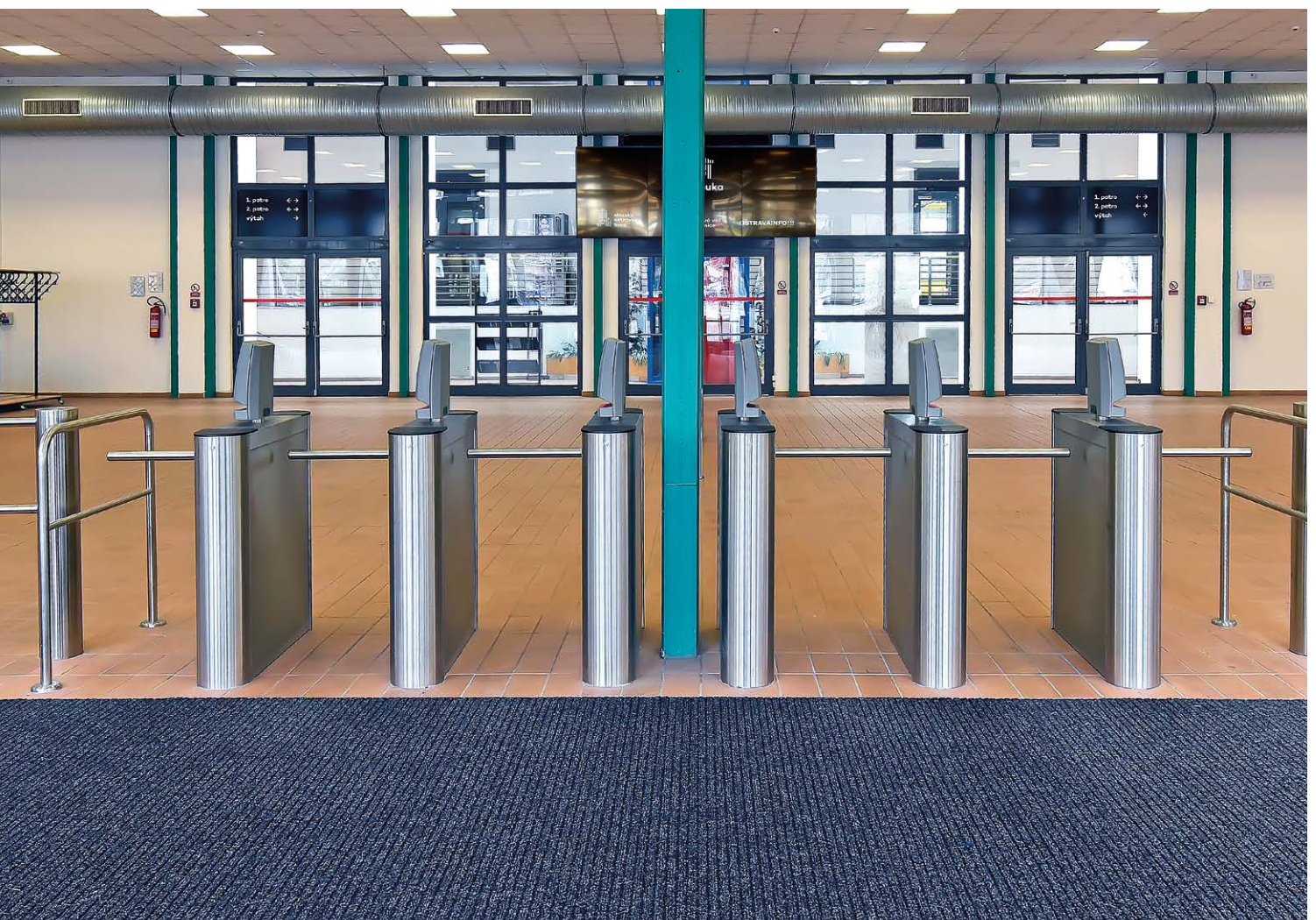
BAR ONE was designed with respects to features, aesthetics and reliability while cost of ownership has been lowered without making compromises.

C O N T E N T S

5	BAR ONE Unipod	13	BAR ST-DUO
6	BAR ONE Tripod	14	BAR SKR
7	BAR ONE Gate	15	BAR SKR-DropArm
8	BAR BA	16	BAR GX
9	BAR EC	18	Specification Overview
10	BAR EK	20	Options & Accessories
11	BAR EK-Wall		
12	BAR ST		



B A R O N E





BAR ONE Unipod

Standard Equipment

Emergency Drop Arm
 Integrated disc spring brake
 Go Call - visual entry invitation feature
 Unobstructed passage including automatic reset

Drive Mechanism

Magnetic Direct Drive

Operating Environment

Indoor
 Outdoor*
 -25°C to +60°C / -13°F to 140°F *

Safety & Security detection

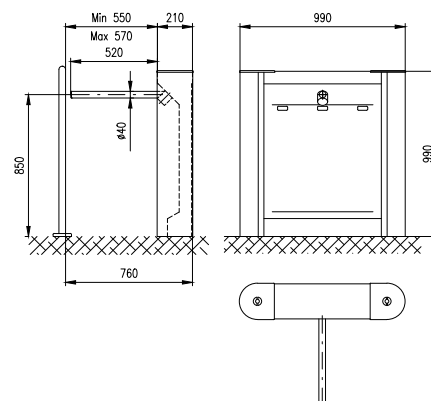
Climb over/crawl under*
 Permanently blocked mode
 Emergency mode

Optional Accessories

RFID reader bracket (top / flush mounted)
 Access Light / Lane Light
 WAV player
 USB convertor / Ethernet convertor
 EasyTouch / TouchPanel / T-MON sw
 SuperCap (emergency power back-up)
 Alternative surface finishes
 Optional top finishes
 Ramp LT
 Arm protector



Cabinet height	990 mm / 39.0"
Cabinet length	990 mm / 39.0"
Cabinet width	210 mm / 8.3"
Passage width	max 570 mm / max 22.5"
Cabinet	Brushed stainless steel
Top Lid	Brushed stainless steel with plastic ends
Barrier	Single arm / Brushed stainless steel



* Optional accessories



BAR ONE Tripod

Standard Equipment

Integrated disc spring brake
Go Call - visual entry invitation feature
Unobstructed passage including automatic reset

Drive Mechanism

Magnetic Direct Drive

Operating Environment

Indoor
Outdoor*
-25°C to +60°C / -13°F to 140°F *

Safety & Security detection

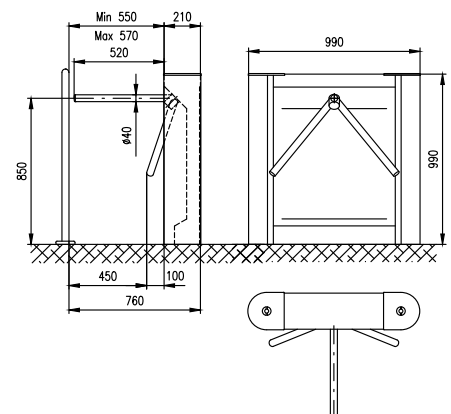
Climb over / crawl under*
Permanently blocked mode
Emergency mode
Emergency Drop Arm*

Optional Accessories

RFID reader bracket (top / flush mounted)
Access Light / Lane Light
WAV player
USB convertor / Ethernet convertor
EasyTouch / TouchPanel / T-MON sw
Alternative surface finishes
Optional top finishes
Ramp LT
Arm protector



Cabinet height	990 mm / 39.0"
Cabinet length	990 mm / 39.0"
Cabinet width	210 mm / 8.3"
Passage width	max 570 mm / max 22.5"
Cabinet	Brushed stainless steel
Top Lid	Brushed stainless steel with plastic ends
Barrier	Tripod arms / Brushed stainless steel



* Optional accessories



BAR ONE Gate

Standard Equipment

Emergency Drop Arm
 Integrated disc spring brake
 Go Call - visual entry invitation feature
 Unobstructed passage including automatic reset

Drive Mechanism

Magnetic Direct Drive

Operating Environment

Indoor
 Outdoor*
 -25°C to +60°C / -13°F to 140°F *

Safety & Security detection

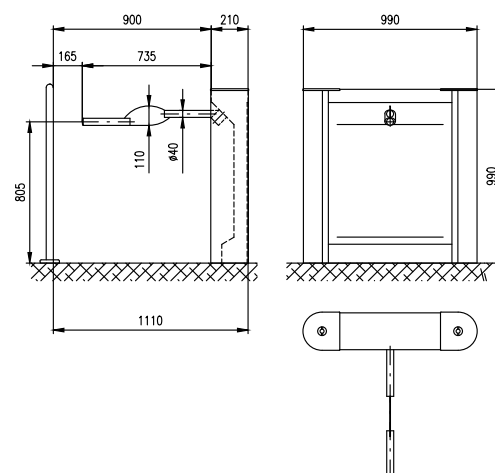
Climb over / crawl under*
 Permanently blocked mode
 Emergency mode

Optional Accessories

RFID reader bracket (top / flush mounted)
 Access Light / Lane Light
 WAV player
 USB convertor / Ethernet convertor
 EasyTouch / TouchPanel / T-MON sw
 SuperCap (emergency power back-up)
 Alternative surface finishes
 Optional top finishes
 Ramp LT



Cabinet height	990 mm / 39.0"
Cabinet length	990 mm / 39.0"
Cabinet width	210 mm / 8.3"
Passage width	900 mm / 35.4"
Cabinet	Brushed stainless steel
Top Lid	Brushed stainless steel with plastic ends
Barrier	Single arm / Brushed stainless steel



* Optional accessories

vitesco

TECHNOLOGIES



BAR BA

Standard Equipment

Go Call - visual entry invitation feature
Bi-directional passage

Drive Mechanism

Fail-Safe

Operating Environment

Indoor
Outdoor*
-25°C to +60°C / -13F° to 140°F*

Safety & Security detection

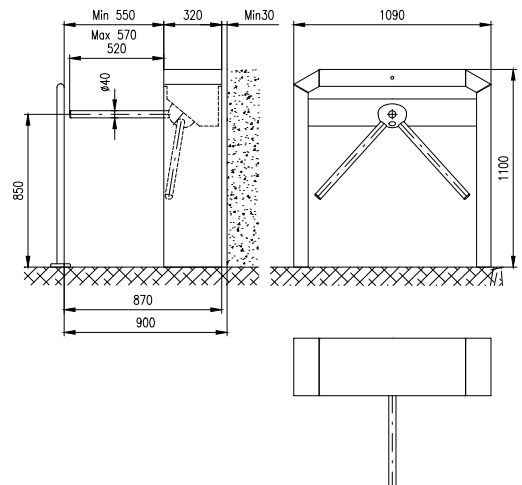
Climb over / crawl under*
Permanently blocked mode
Emergency mode
Emergency Drop Arm*

Optional Accessories

RFID reader bracket (top / flush mounted)
Access Light / Lane Light
WAV player
USB convertor / Ethernet convertor
EasyTouch / TouchPanel / T-MON sw
Visitor card collector
SuperCap (emergency power back-up)
Ramp LT
Arm protector



Cabinet height	1100 mm / 43.3"
Cabinet length	1090 mm / 42.9"
Cabinet width	320 mm / 12.6"
Passage width	max 570 mm / max 22.5"
Cabinet	Brushed stainless steel
Top Lid	Brushed stainless steel
Barrier	Tripod arms / Brushed stainless steel



* Optional accessories



BAR EC

Standard Equipment

Go Call - visual entry invitation feature
Bi-directional passage

Drive Mechanism

Fail-Safe

Operating Environment

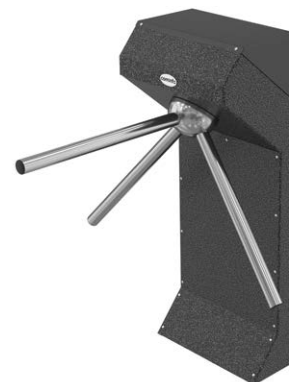
Indoor
Outdoor covered*^[1]
-25°C to +60°C / -13°F to 140°F*

Safety & Security detection

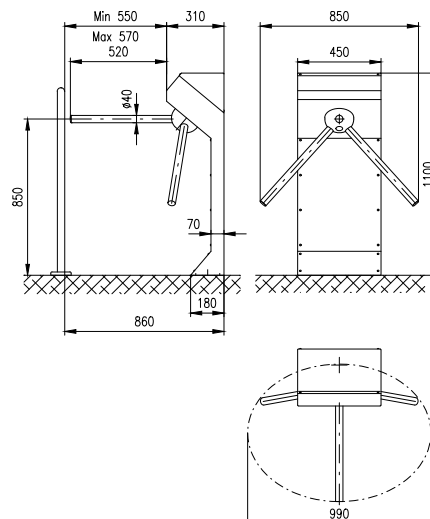
Climb over / crawl under*
Permanently blocked mode
Emergency mode
Emergency Drop Arm*

Optional Accessories

RFID reader bracket (top / flush mounted)
Lane Light
WAV player
USB convertor / Ethernet convertor
EasyTouch / TouchPanel / T-MON sw
SuperCap (emergency power back-up)
Alternative surface finishes
Ramp LT
Arm protector



Cabinet height	1100 mm / 43.3"
Cabinet length	450 mm / 17.7"
Cabinet width	310 mm / 12.2"
Passage width	max 570 mm / max 22.5"
Cabinet	Painted Polyester Powder Coated / Brushed stainless steel
Top Lid	Painted Polyester Powder Coated / Brushed stainless steel
Barrier	Tripod arms / Brushed stainless steel



* Optional accessories. ^[1] The roof needs to overlap the turnstile sufficiently



BAR EK

Standard Equipment

Go Call - visual entry invitation feature
Bi-directional passage

Drive Mechanism

Fail-Safe

Operating Environment

Indoor
Outdoor covered*^[1]
-25°C to +60°C / -13F° to 140°F*

Safety & Security detection

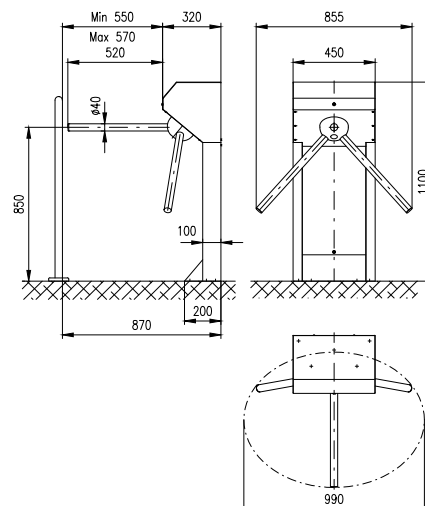
Climb over / crawl under*
Permanently blocked mode
Emergency mode
Emergency Drop Arm*

Optional Accessories

RFID reader bracket (top / flush mounted)
Lane Light
WAV player
USB convertor / Ethernet convertor
EasyTouch / TouchPanel / T-MON sw
SuperCap (emergency power back-up)
Ramp LT
Arm protector



Cabinet height	1100 mm / 43.3"
Cabinet length	450 mm / 17.7"
Cabinet width	320 mm / 12.6"
Passage width	max 570 mm / max 22.5"
Cabinet	Brushed stainless steel
Top Lid	Brushed stainless steel
Barrier	Tripod arms / Brushed stainless steel



* Optional accessories ^[1] The roof needs to overlap the turnstile sufficiently



BAR EK-Wall

Standard Equipment

Go Call - visual entry invitation feature
Bi-directional passage

Drive Mechanism

Fail-Safe

Operating Environment

Indoor
Outdoor covered*^[1]
-25°C to +60°C / -13F° to 140°F*

Safety & Security detection

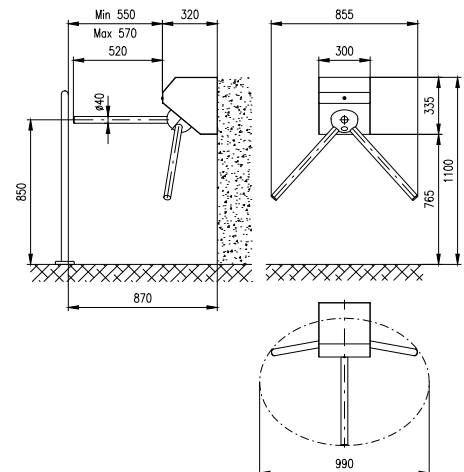
Climb over / crawl under*
Permanently blocked mode
Emergency mode
Emergency Drop Arm*

Optional Accessories

RFID reader bracket (top / flush mounted)
Lane Light
WAV player
USB convertor / Ethernet convertor
EasyTouch / TouchPanel / T-MON sw
SuperCap (emergency power back-up)
Arm protector



Cabinet height	335 mm / 13.2"
Cabinet length	300 mm / 11.8"
Cabinet width	320 mm / 12.6"
Passage width	max 570 mm / max 22.5"
Cabinet	Brushed stainless steel
Top Lid	Brushed stainless steel
Barrier	Tripod arms / Brushed stainless steel



* Optional accessories ^[1] The roof needs to overlap the turnstile sufficiently



BAR ST

Standard Equipment

Go Call - visual entry invitation feature
Bi-directional passage

Drive Mechanism

Fail-Safe

Operating Environment

Indoor
Outdoor*
-25°C to +60°C / -13F° to 140°F*

Safety & Security detection

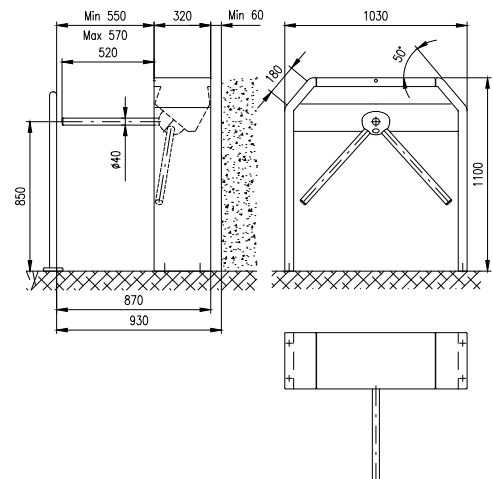
Climb over/crawl under*
Permanently blocked mode
Emergency mode
Emergency Drop Arm *

Optional Accessories

RFID reader bracket (top / flush mounted)
Access Light / Lane Light
WAV player
USB convertor / Ethernet convertor
EasyTouch / TouchPanel / T-MON sw
Visitor card collector
SuperCap (emergency power back-up)
Alternative surface finishes
Ramp LT
Arm protector



Cabinet height	1100 mm / 43.3"
Cabinet length	1030 mm / 40.55"
Cabinet width	320 mm / 12.6"
Passage width	max 570 mm / max 22.5"
Cabinet	Painted Polyester Powder Coated / Brushed stainless steel
Top Lid	Painted Polyester Powder Coated / Brushed stainless steel
Barrier	Tripod arms / Brushed stainless steel



* Optional accessories



BAR ST-DUO

Standard Equipment

Go Call - visual entry invitation feature
Bi-directional passagee

Drive Mechanism

Fail-Safe

Operating Environment

Indoor
Outdoor*
-25°C to +60°C / -13F° to 140°F*

Safety & Security detection

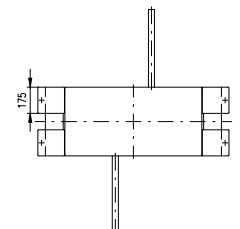
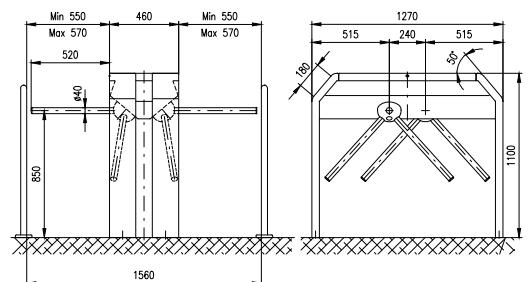
Climb over / crawl under *
Permanently blocked mode
Emergency mode
Emergency Drop Arm *

Optional Accessories

RFID reader bracket (top / flush mounted)
Access Light / Lane Light
WAV player
USB convertor / Ethernet convertor
EasyTouch / TouchPanel / T-MON sw
Visitor card collector
SuperCap (emergency power back-up)
Alternative surface finishes
Ramp LT
Arm protector



Cabinet height	1100 mm / 43.3"
Cabinet length	1270 mm / 50.0"
Cabinet width	460 mm / 18.1"
Passage width	max 570 mm / max 22.5"
Cabinet	Painted Polyester Powder Coated / Brushed stainless steel
Top Lid	Painted Polyester Powder Coated / Brushed stainless steel
Barrier	Tripod arms / Brushed stainless steel



* Optional accessories



BAR SKR

Standard Equipment

Go Call - visual entry invitation feature
Bi-directional passage

Drive Mechanism

Fail-Safe

Operating Environment

Indoor
Outdoor*
-25°C to +60°C / -13F° to 140°F*

Safety & Security detection

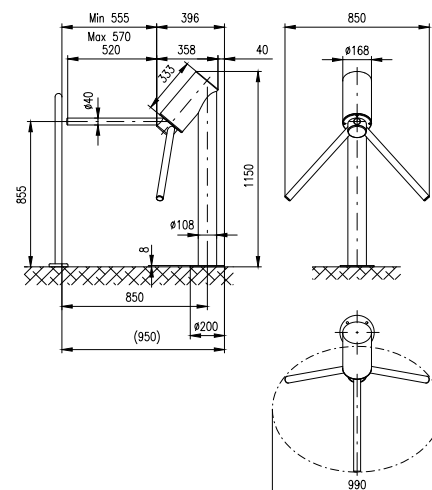
Permanently blocked mode
Emergency mode

Optional Accessories

RFID reader bracket (top mounted)
WAV player
USB convertor / Ethernet convertor
EasyTouch / TouchPanel / T-MON sw
SuperCap (emergency power back-up)
Alternative surface finishes
Ramp LT
Arm protector



Cabinet height	1150 mm / 45.3"
Cabinet length	168 mm / 6.6"
Cabinet width	358 mm / 14.1"
Passage width	max 570 mm / max 22.5"
Cabinet	Brushed stainless steel
Top Lid	Brushed stainless steel
Barrier	Tripod arms / Brushed stainless steel



* Optional accessories



BAR SKR-DropArm

Standard Equipment

Go Call - visual entry invitation feature
Emergency Drop Arm
Bi-directional passage

Drive Mechanism

Fail-Safe

Operating Environment

Indoor
Outdoor*
-25°C to +60°C / -13F° to 140°F*

Safety & Security detection

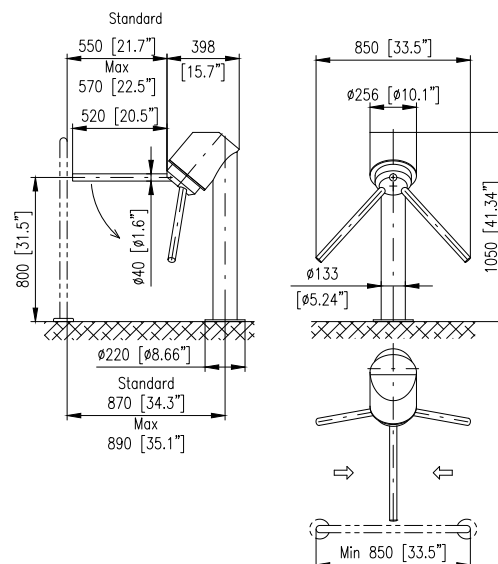
Permanently blocked mode
Emergency mode

Optional Accessories

RFID reader bracket (top / flush mounted)
WAV player
USB convertor / Ethernet convertor
EasyTouch / TouchPanel / T-MON sw
SuperCap (emergency power back-up)
Alternative surface finishes
Ramp LT
Arm protector



Cabinet height	1050 mm / 41.3"
Cabinet length	256 mm / 10.1"
Cabinet width	398 mm / 15.7"
Passage width	max 570 mm / max 22.5"
Cabinet	Brushed stainless steel
Top Lid	Brushed stainless steel
Barrier	Tripod arms / Brushed stainless steel



* Optional accessories



BAR GX

Standard Equipment

Go Call - visual entry invitation feature
Bi-directional passage

Drive Mechanism

Fail-Safe

Operating Environment

Indoor

Safety & Security detection

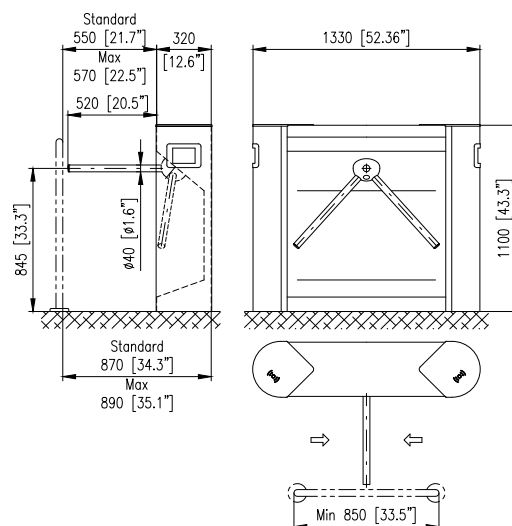
Climb over / crawl under*
Permanently blocked mode
Emergency mode
Emergency Drop Arm*

Optional Accessories

RFID reader bracket (top / flush mounted)
Access Light / Lane Light
Outdoor package
WAV player
USB convertor / Ethernet convertor
EasyTouch / TouchPanel / T-MON sw
Visitor card collector
SuperCap (emergency power back-up)
Optional top finishes
Ramp LT
Arm protector



Cabinet height	1100 mm / 43.3"
Cabinet length	1330 mm / 52.36"
Cabinet width	320 mm / 12.6"
Passage width	max 570 mm / max 22.5"
Cabinet	Brushed stainless steel
Top Lid	Brushed stainless steel with glass ends
Barrier	Tripod arms / Brushed stainless steel



*Optional accessories



Turnstile model BAR

BAR ONE Unipod



BAR ONE Tripod



BAR ONE Gate



BAR BA



Dimensions

Cabinet height	990	990	990	1100
Cabinet length	990	990	990	1090
Cabinet width	210	210	210	320
Passage width (max)	570	570	900	570
Barrier type (T-Tripod, S-Single Arm)	S	T	S	T
DDA (ADA) compliant	-	-	•	-
Bi-directional passage mode	•	•	•	•

Material and Colors

Stainless steel cabinet / Painted polyester powder coated	• / -	• / -	• / -	• / -
RAL painted cabinet	•	•	•	-
Stainless steel barrier	•	•	•	•

Safety Features

Emergency mode / Emergency Drop Arm [1]	• / • [3]	• / •	• / • [3]	• / •
Crawl under [1] / Climb over detection [1]	• / •	• / •	• / •	• / •
Fail-Safe motor drive unit [2]	-	-	-	•
Advanced Magnetic Direct Drive motor	•	•	•	-

Communication Interface

Relay Inputs / Outputs	• [1]	• [1]	• [1]	•
RS485 / USB / Ethernet	• / • / • [1]	• / • / • [1]	• / • / • [1]	• / • / •

Operating Environment

Indoor / Outdoor with cover* / Outdoor uncovered*	• / • / •	• / • / •	• / • / •	• / • / •
---	-----------	-----------	-----------	-----------

Optional Features

Integrated RFID reader bracket	•	•	•	•
Access Light	•	•	•	•
Lane Light	•	•	•	•

Optional Remote Control Systems

External implementation of Identification or Ticket terminals	•	•	•	•
Remote control console (EasyTouch, TouchPanel)	•	•	•	•
TMON SW application (remote control from any PC) / Passage Scheduler (automatic planner)	• / •	• / •	• / •	• / •
Integrated visitor card collector	-	-	-	•

Optional Power Supply Input

13.8V DC / 230V AC or 110VAC	- / •	- / •	- / •	- / •
SuperCap (emergency power back-up)	•	•	•	•

Optional Finishes

Tops - Natural Stone, Corian, Glass, Wood etc.	•	•	•	-
Alternative surface finishes - Black Stainless Steel, Brass, Bronze, Copper etc.	•	•	•	-

Optional mounting accessories

Ramp LT - Structural Mounting Bases (surface mounting system - with no drilling or floor cutting)	•	•	•	•
Mounting console - raised floor or recessed below grade mounting system	•	•	•	•

[1] Optional
• = Available

[2] Free-to-Move unpowered
- = Not available

[3] Emergency Drop Arm as standard
* = With optional Outdoor package

BAR EC

BAR EK

BAR EK-Wall

BAR ST

BAR ST-DUO

BAR SKR

BAR SKR-DropArm

BAR GX



1100	1100	335	1100	1100	1150	1150	1100
450	450	300	1030	1270	168	256	1330
310	320	320	320	460	358	398	320
570	570	570	570	570	570	570	570
T	T	T	T	T	T	T	T
-	-	-	-	-	-	-	-
•	•	•	•	•	•	•	•
•/•	•/-	•/-	•/•	•/•	•/-	•/-	•/-
•	-	-	•	•	-	-	-
•	•	•	•	•	•	•	•
•/•	•/•	•/•	•/•	•/•	•/-	•/• [3]	•/•
•/•	•/•	•/•	•/•	•/•	-/-	-/-	•/•
•	•	•	•	•	•	•	•
-	-	-	-	-	-	-	-
•	•	•	•	•	•	•	•
•/•/•	•/•/•	•/•/•	•/•/•	•/•/•	•/•/•	•/•/•	•/•/•
•/•/-	•/•/-	•/•/-	•/•/•	•/•/•	•/•/•	•/•/•	•/-/-
•	•	•	•	•	-	•	•
-	-	-	•	•	-	-	•
•	•	•	•	•	-	-	•
•	•	•	•	•	•	•	•
•	•	•	•	•	•	•	•
•/•	•/•	•/•	•/•	•/•	•/•	•/•	•/•
-	-	-	•	•	-	-	•
•/•	•/•	•/•	•/•	•/•	•/-	•/-	•/•
•	•	•	•	•	•	•	•
-	-	-	-	-	-	-	•
-	-	-	-	-	-	-	-
•	•	-	•	•	•	•	•
•	•	•	•	•	•	•	•

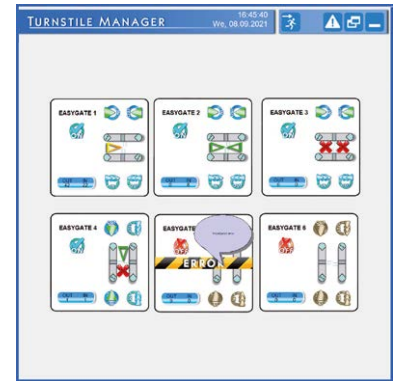
Options & Accessories



EASYTOUCH - turnstile remote control console with an intuitive graphical user interface



TOUCHPANEL - Touch-button panel for remote control of turnstiles and gates



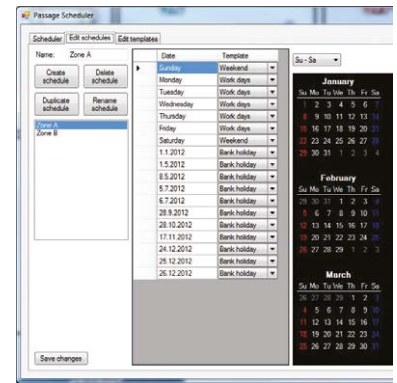
TMON SOFTWARE - software application for easy remote control of the turnstiles and gates



ACCESS LIGHT - access control light with integrated RFID bracket



LANE LIGHT - front mounted lane accessibility light panel



PASSAGE SCHEDULER - software planner for automatic time programming of turnstile operation mode



EMERGENCY DROP ARM - automatically drops the horizontal arm in emergency mode



ANTICLIMB SENSORS - infrared sensors to detect climbing over/crawling under the tripod (unipod) arms



ARM PROTECTOR - protector of tripod/unipod bar made of black toughened rubber material



WAV PLAYER - sound signaling device for audio confirmation of turnstile operation mode



OUTDOOR PACKAGE - special package for outdoor application (heating module + IP protection)



SUPERCAP - maintenance-free power package for Emergency opening of turnstile/gate



EXI-BADGE - visitor card / badge collector with return function implemented in stainless steel pole



EXI2 - integrated visitor card collector with collection box



TICKETING TERMINAL - external implementation of identification terminals



RAMPA LT - for installation on floor where drilling/cutting is not allowed



MOUNTING CONSOLE - mounting console for raised/suspended floor



ALTERNATIVE SURFACE FINISH - polished stainless steel / brushed stainless steel / etc.



ADDITIONAL GATE PEGAS GLE - alternative motorized swing gate for wheelchair access



GLASS INFILL BARRIER - convenient way to aesthetically enclose the secure areas from public area







ed. VI-2022

Specifications are subject to change without prior notice.



DFE Security Sp. z o.o.

ul. Polska 25, 00-703 Warszawa

T +48 22 622 22 73

biuro@dfes.pl

www.dfes.pl

cominfo
security first